

# GENERAL PURPOSE 12" TRIANGLE

12" x 60° equilateral triangular truss is designed and manufactured for high strength, in relation to storage space required. The main chords are 2" x 0.125" tube and the diagonals are 1" x 0.125" tube in either 6082T6 or 6061T6. The truss can be used with a Ground Support System with appropriate Sleeve Blocks and Towers. Each section is complete with bolts.

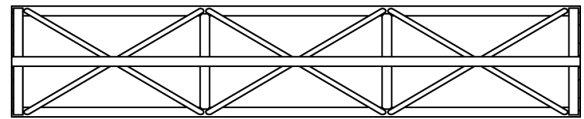


## Standard lengths and weights

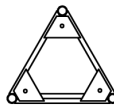
PRODUCT CODE	DESCRIPTION	WT lbs
B9120	10' section	45
B9096	8' section	35
B9060	5' section	25
B9030	2.5' section	18

## Corners

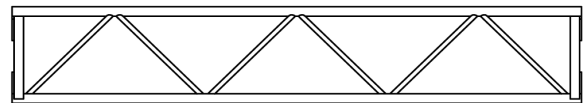
PRODUCT CODE	DESCRIPTION	WT lbs
B9002	2 way corner block	13
B9003	3 way corner block	18
B9004	4 way corner block	23
B9008	Flat pivot section	17



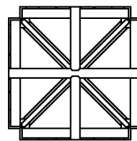
Plan View



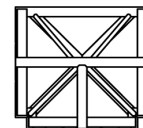
End View



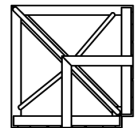
Side View



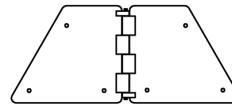
4 Way



3 Way



2 Way



Flat Pivot Section  
0-180°

## Loading chart

Allowable Load Data	Maximum Allowable Uniform Loads		Maximum Allowable Center Point Loads		
	Span feet	Loads pounds	Maximum deflection inches	Loads pounds	Maximum deflection inches
<b>10</b>		5000	0.41	2500	0.41
<b>20</b>		2300*	1.50	1450	1.50
<b>30</b>		1030*	2.25	650	2.25
<b>40</b>		580*	3.00	360	3.00

**LOADING FIGURES** show maximum loads between supports in addition to self weight of truss. Information extracted from structural report by Jessie Mise. + Denotes load limited to suit maximum shear capacity. \*Denotes load limited to a maximum deflection of (span/160). All loads include a 20% overload factor for dynamic effects.